

INNOVATE. INVEST. INSPIRE.



The IC20 is an index of the most successful and impactful companies that have received funding through the Investors' Circle network since 1992. These companies stand as shining examples of the potential of social enterprise, proving that a focus on sustainability and social impact need not compromise profitability and that socially responsible investment can result in substantial internal and external return.



- 1 Environmental assessments, remediation, and engineering services cardinalres.com



- 11 Environmentally friendly solar panels evergreensolar.com



- 2 Sustainably-grown Yerba Mate guayaki.com



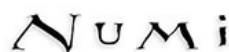
- 12 Durable surfaces from recycled glass and concrete icestone.biz



- 3 Energy efficient lighting fixtures oriones.com



- 13 Natural Products for pest and weed management marronebio.com



- 4 Organic full leaf teas numitea.com



- 14 Solar electric and solar hot water for homes, businesses, dealers and contractors grosolar.com



- 5 Internet organic grocery delivery company spud.com



- 15 Student drop-out prevention curriculum scholarcentric.com



- 6 All natural, cultural beverages honesttea.com



- 16 Organic cotton clothing wildlifeworks.com



- 7 Renewable power in Latin America



- 17 Renewable energy and carbon offsets renewablechoice.com



- 8 Wild-harvested rainforest fruits from Brazil sambazon.com



- 18 Providing access for two billion villagers unitedvillages.com



- 9 Fair Trade specialty foods equalexchange.coop



- 19 All-natural and organic pizza products rusticcrust.com



- 10 Naturally and humanely produced beef and pork nimanranch.com

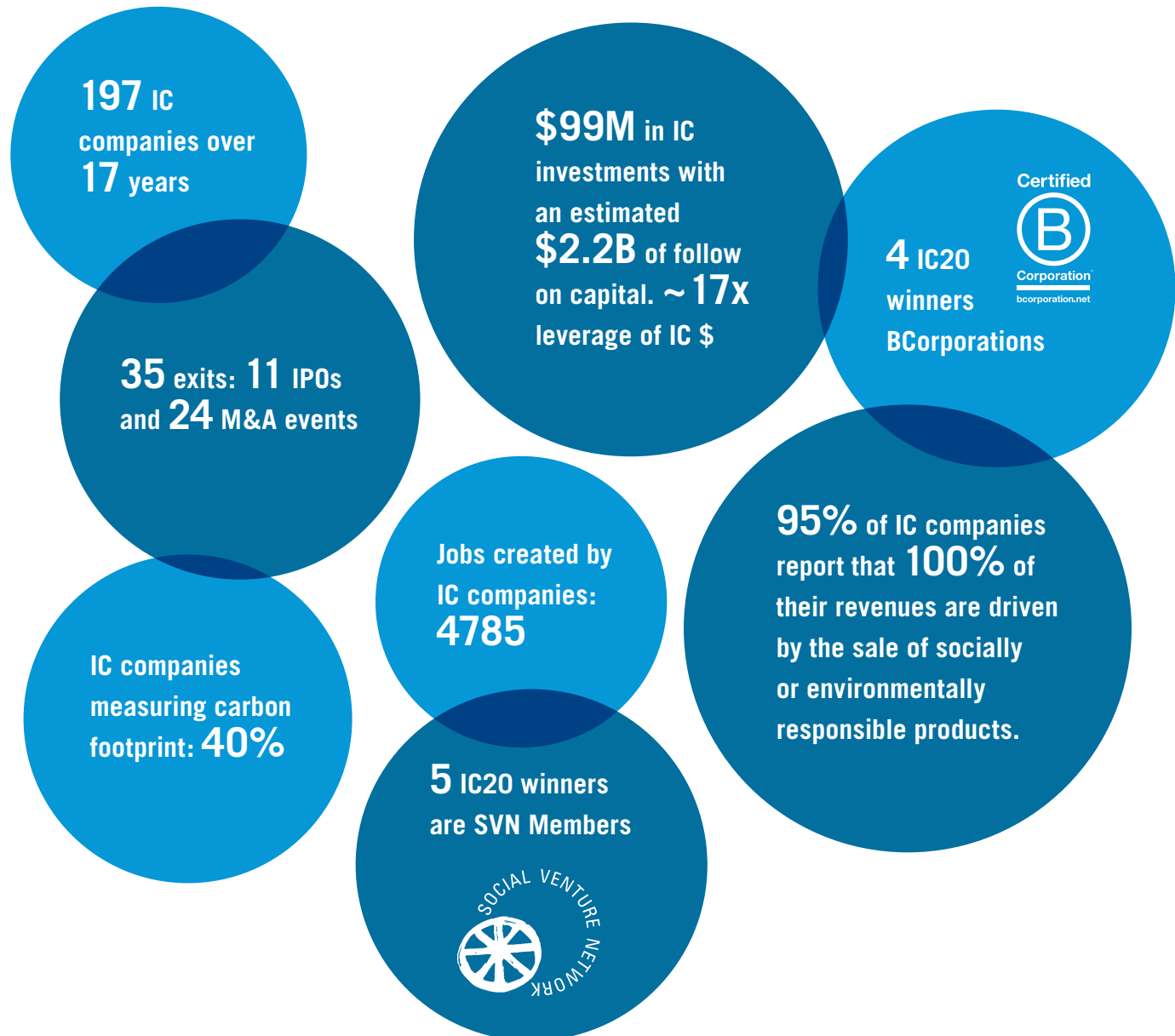


- 20 Plant food products made from recycled materials terracycle.net

THE RESEARCH METHODOLOGY

In selecting the IC20, we looked at 197 companies and interviewed 68. The final selection of the IC20 winners was determined by a combination of quantitative metrics, such as revenue, growth, and utility expenses as well as qualitative factors, such as investor and entrepreneur interviews. Our research team gathered 23 different quantitative metrics to best determine the impact of each of the IC companies. The data was gathered through primary source interviews, public data, and investor interviews. The 23 quantitative metrics chosen were a selection from the best assessment tools currently available in the sector.

FINDINGS FROM THE IC20 RESEARCH



For more information about the IC20 and Investors' Circle: [INVESTORCIRCLE.NET](https://investorcircle.net)